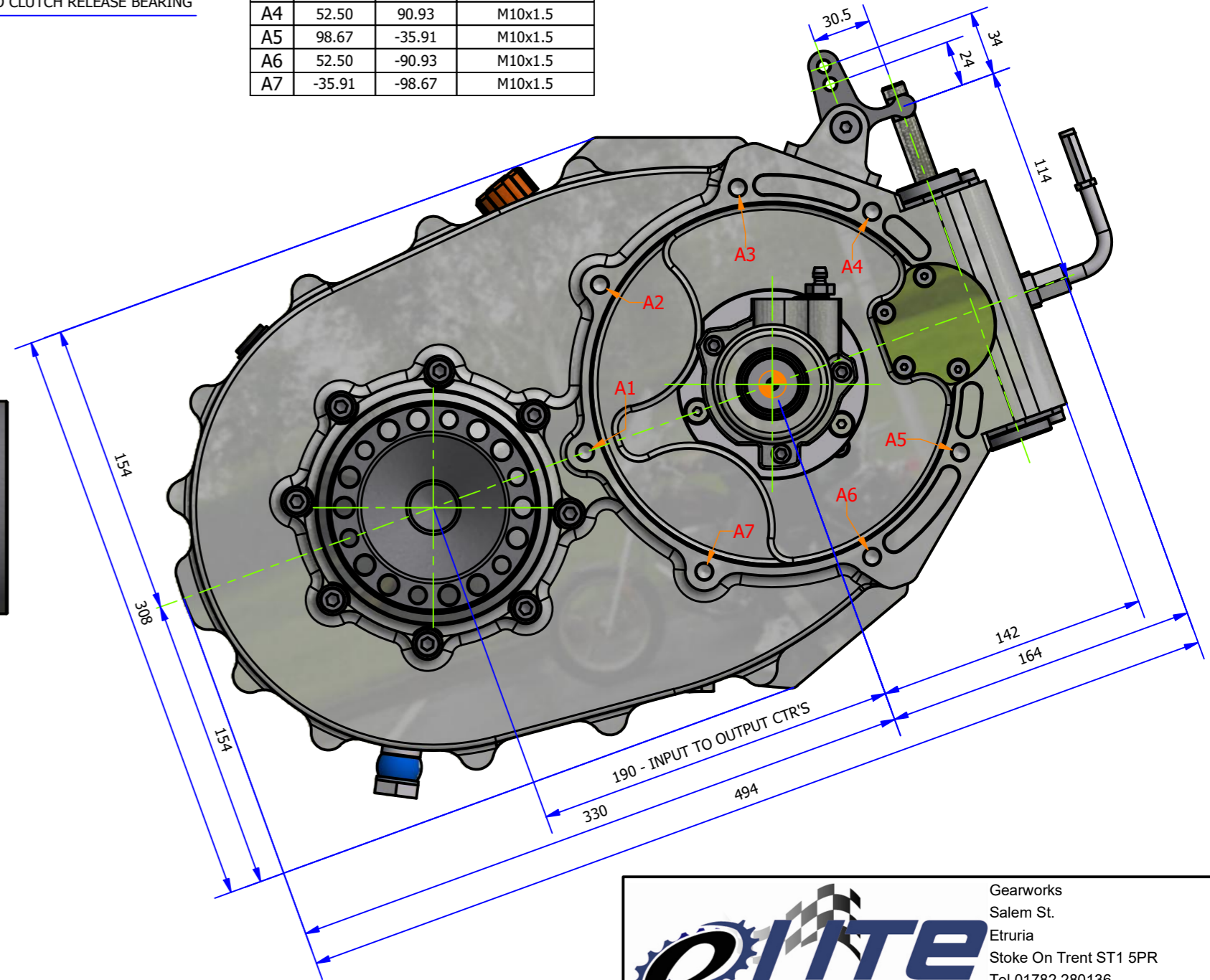
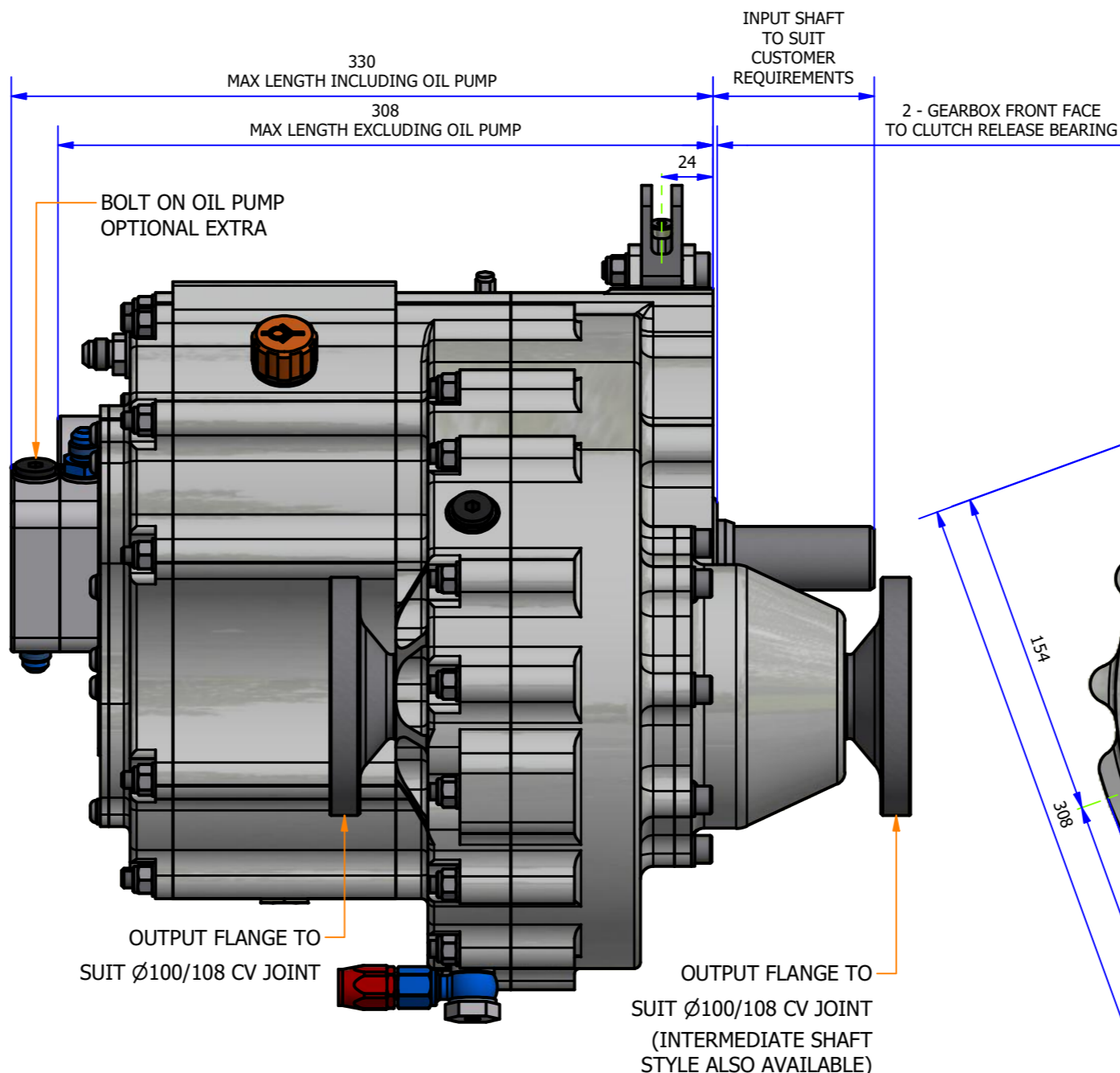
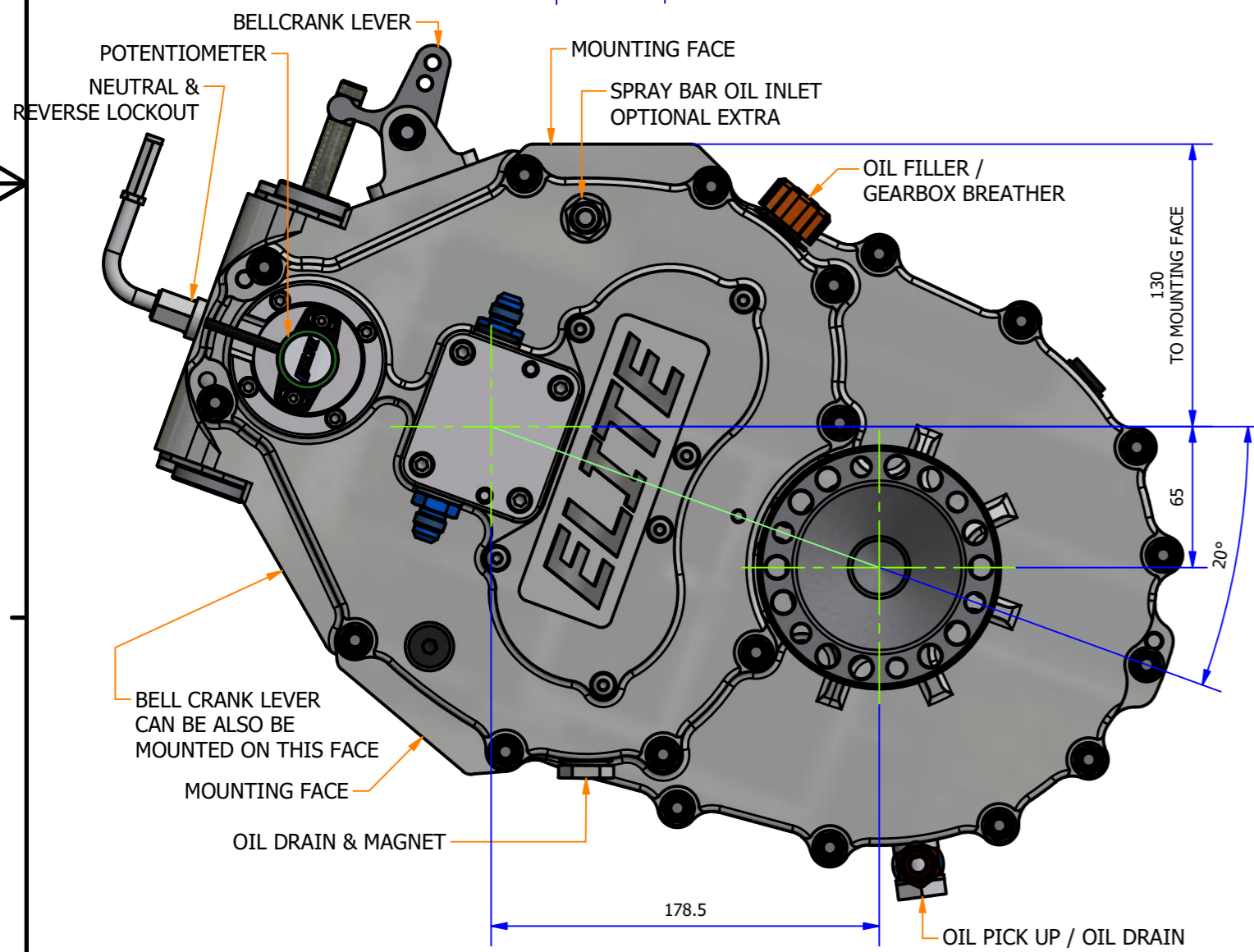


Hole Table			
HOLE	XDIM	YDIM	DESCRIPTION
A1	-98.67	-35.91	M10x1.5
A2	-90.93	52.50	M10x1.5
A3	-18.23	103.40	M10x1.5
A4	52.50	90.93	M10x1.5
A5	98.67	-35.91	M10x1.5
A6	52.50	-90.93	M10x1.5
A7	-35.91	-98.67	M10x1.5



- FWD250-TP**
- 6 SPEEDS + 1 REVERSE GEAR
 - GEAR ORDER = R - N - 1 - 2 - 3 - 4 - 5 - 6
 - MANUAL LOCKOUT BETWEEN 1ST TO NEUTRAL & NEUTRAL TO REVERSE
 - LSD FITTED AS STANDARD
 - APPROXIMATE DRY WEIGHT = 50 KG

Gearworks
Salem St.
Etruria
Stoke On Trent ST1 5PR
Tel 01782 280136
Fax 01782 269913
Email contact@eliteracingtransmissions.com

TITLE
FULL ASSEMBLY FLANGE STYLE -
FWD250-TP-6S

DRG. NO. **ERT915572** ISSUE
0