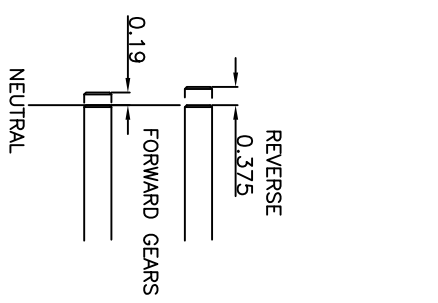
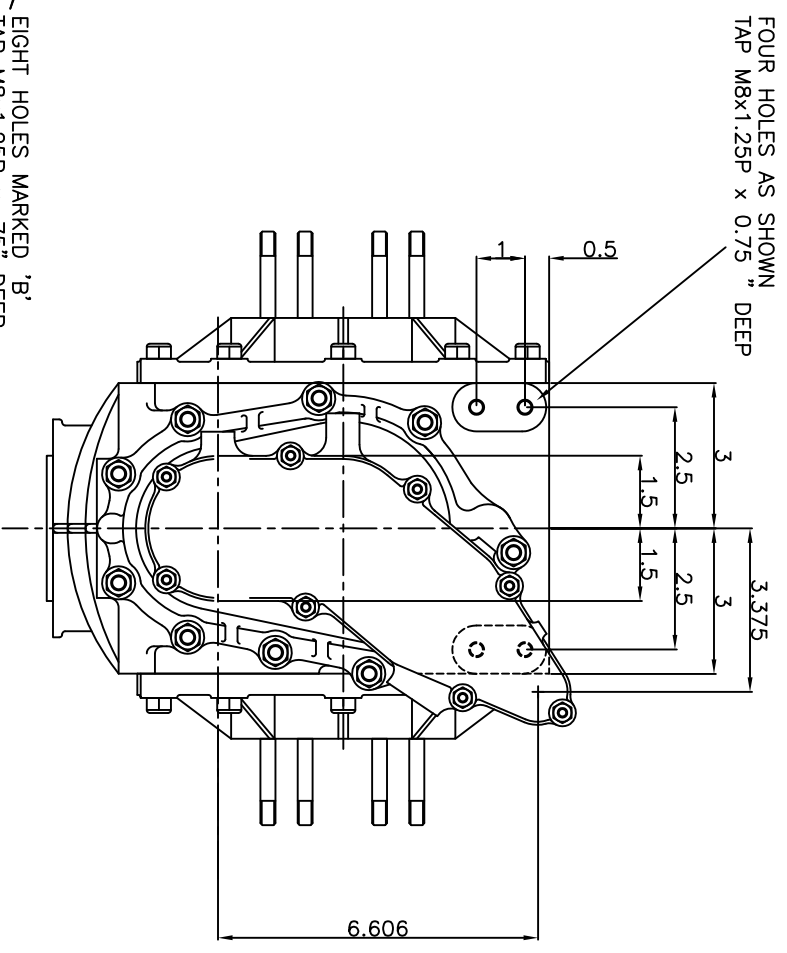


PLEASE NOTE:  
 ALL SIZES ARE IN IMPERIAL (INCHES)  
 TO CONVERT TO MILLIMETERS MULTIPLY  
 SIZES BY 25.4



REV 1 3  
 REV 2 4  
 SHIFT PATTERNS

SELECTOR FINGER MOVEMENT  
 SELECTOR MOVES 28° TOTAL (i.e. 14° EACH WAY)  
 REVERSE IS 0.375" FROM NEUTRAL POSITION  
 ALL FORWARD GEARS ARE 0.19" FROM NEUTRAL POSITION

UNLESS OTHERWISE STATED		SCALE 1:2		Elite Racing	
TOLERANCES	ANGULAR DIMENSIONS	SURFACE FINISH	MATERIAL	SURFACE HARDNESS	TITLE METRIC FIXINGS
= +/- 0° 0' 30"	= +/- 0.5mm	IN µm	-	MIN MAX	ASSEMBLY OUTLINE LAYOUT
				Rc N/50,mm.	KWIKSHIFT 4 OR 5 SPEED
REMOVE ALL SHARP EDGES & BURRS		DO NOT SCALE		DRG. No. SMT-01-74	
				ISSUE 1	