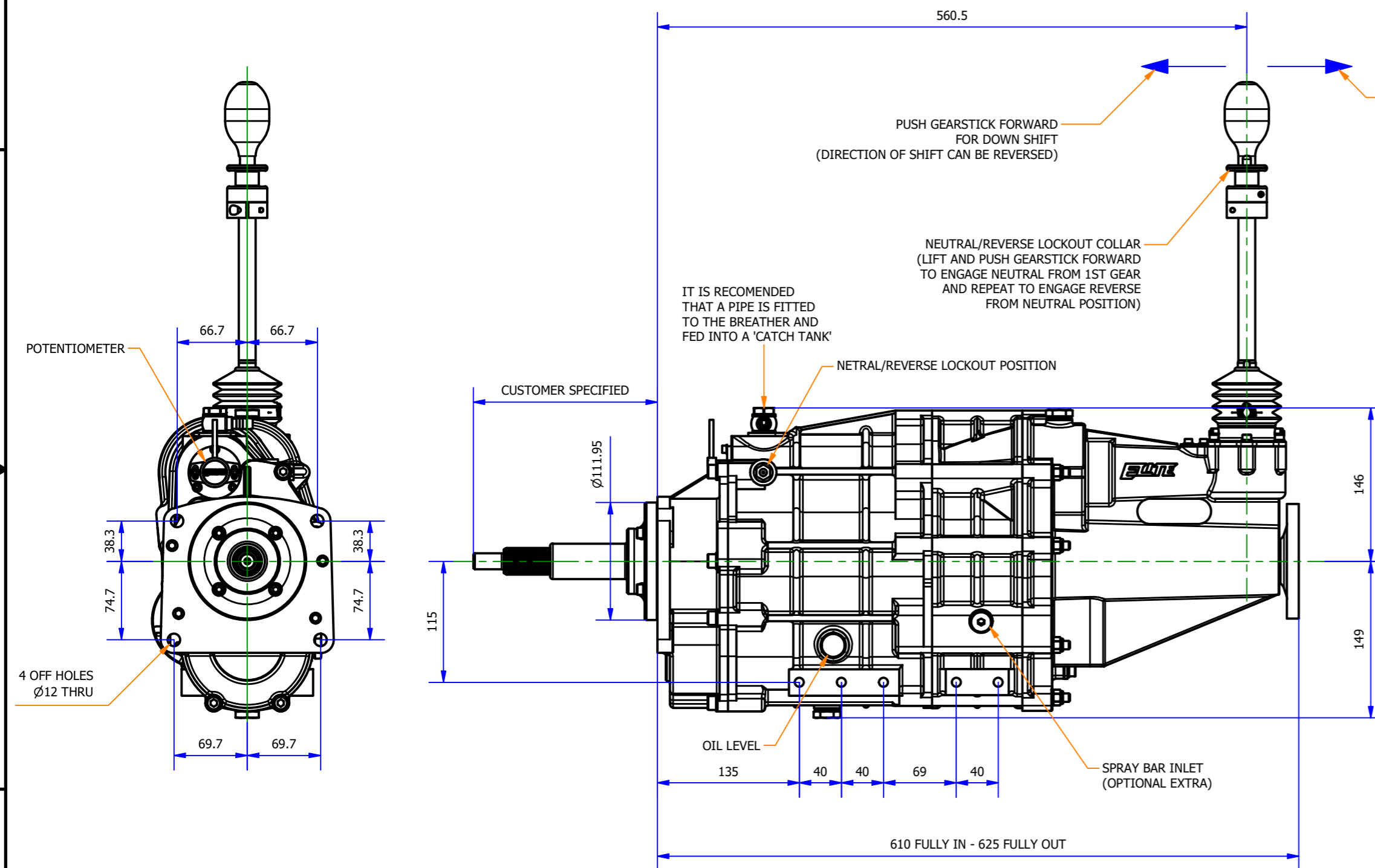
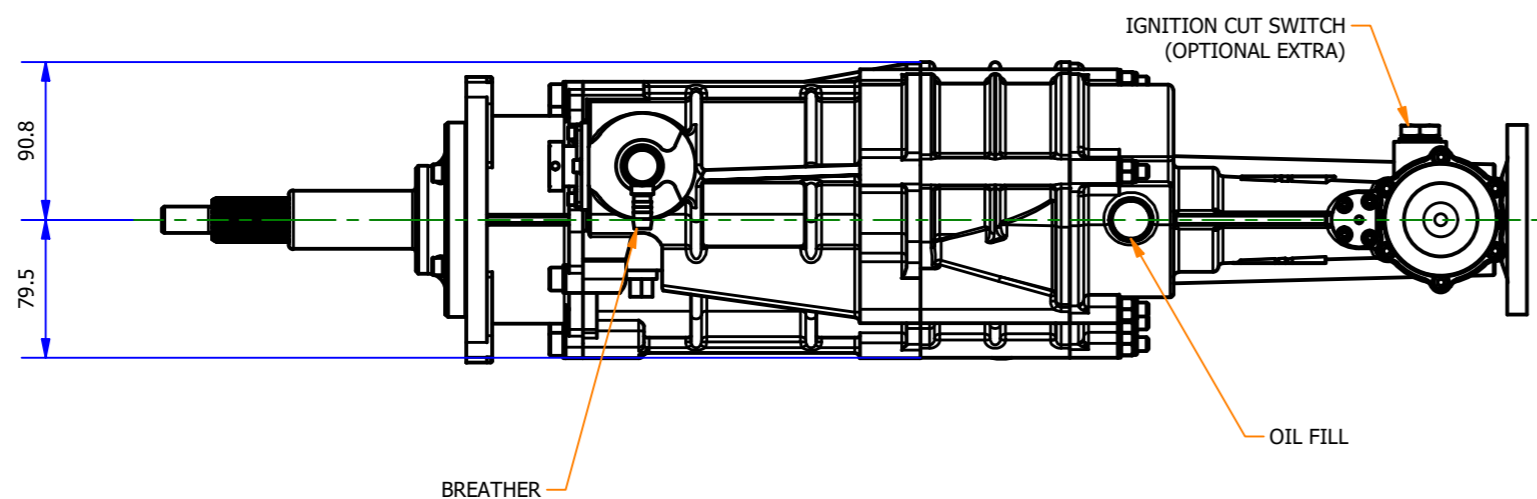


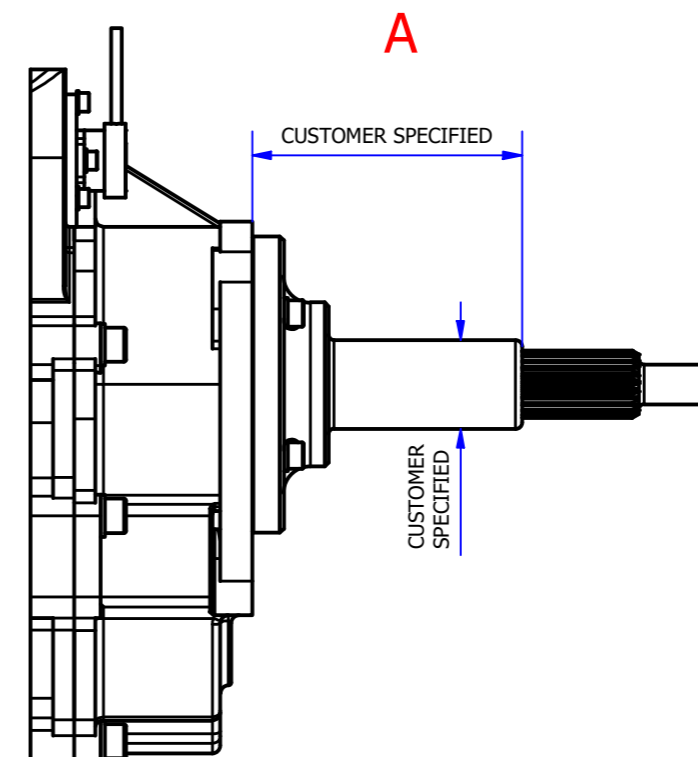
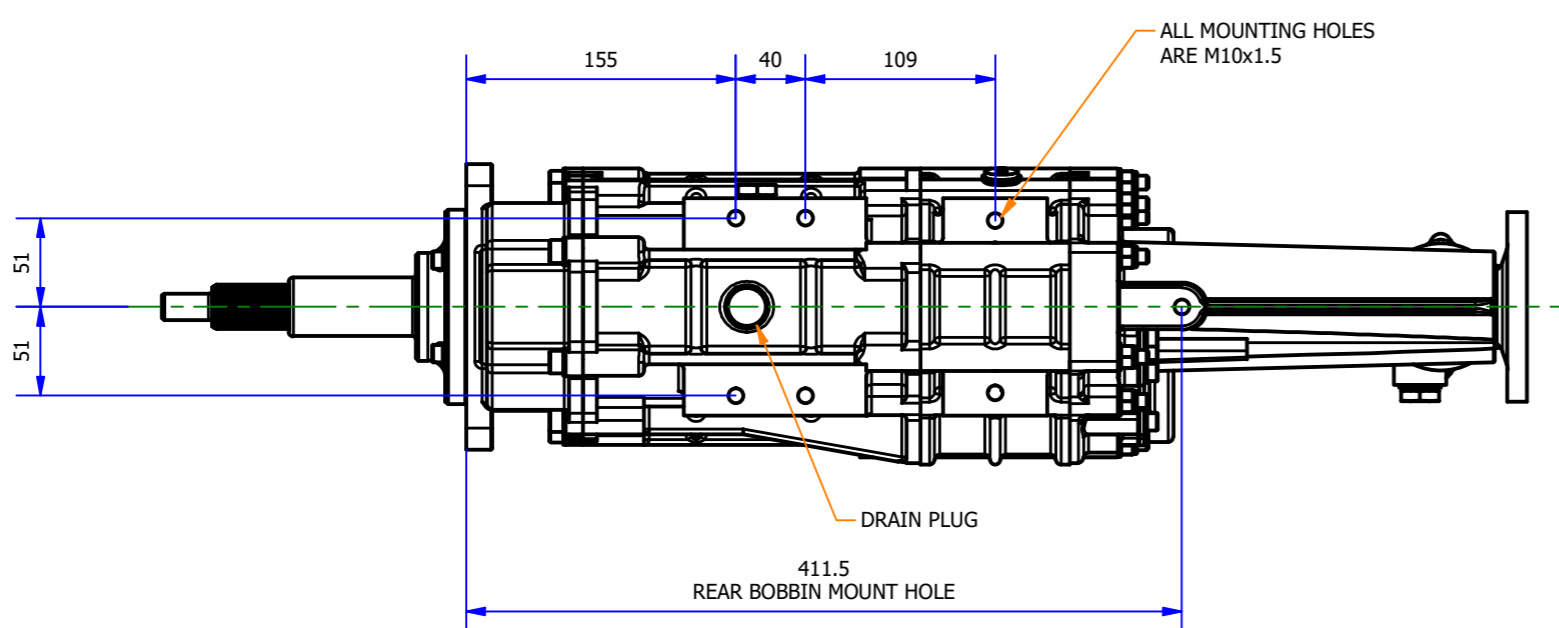
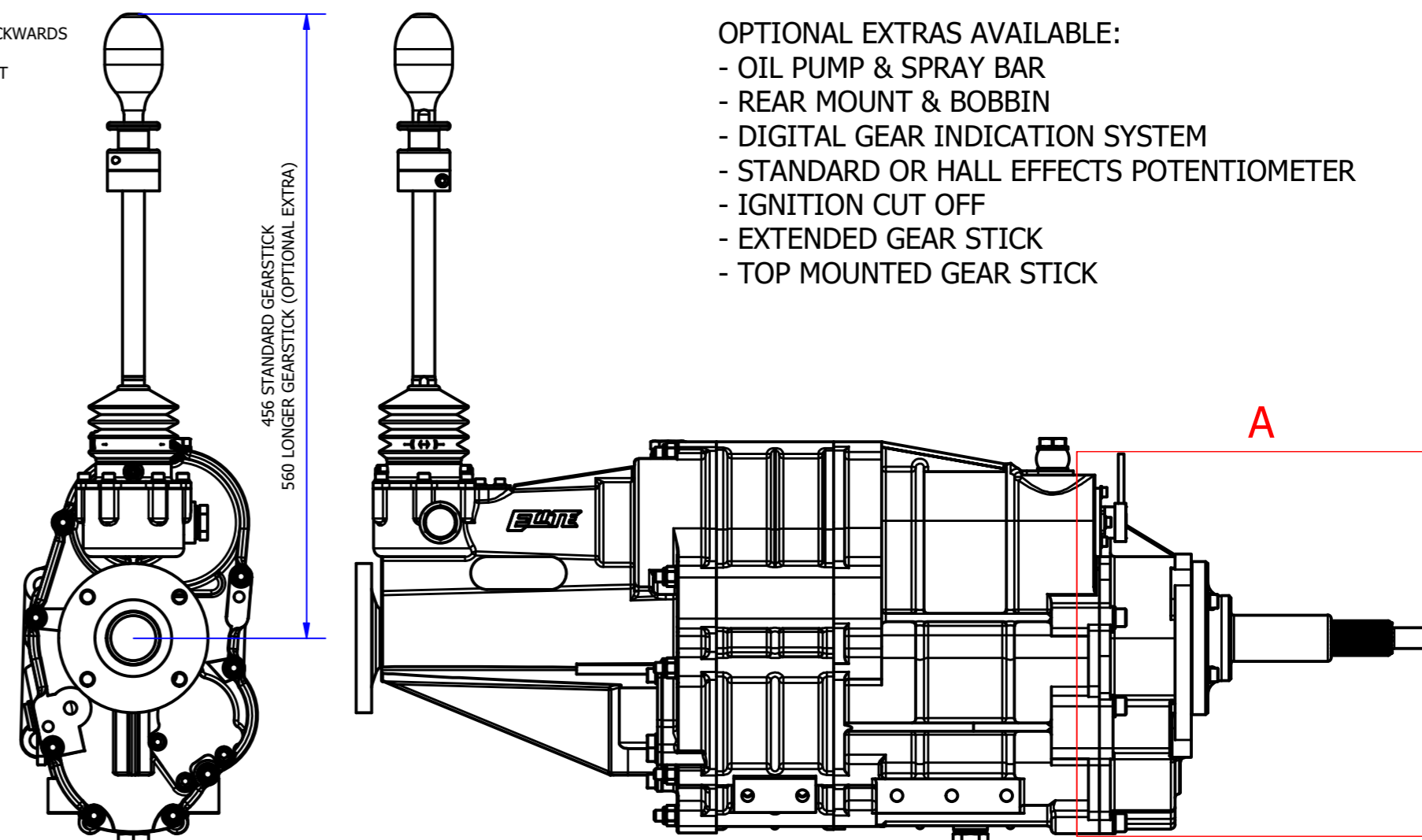
GEARBOX DETAILS;

- GEAR PATTERN R-N-1-2-3-4-5-6
- MANUALLY OPERATED LOCKOUT BETWEEN 1ST/NEUTRAL & NEUTRAL/REVERSE
- OIL CAPACITY APPROXIMATELY 1 LITRE, EXCEPT IF USING THE OIL PUMP AND COOLER. IF THE PUMP AND COOLER ARE IN USE THE QUANTITY OF OIL WILL BE GREATER (1L FOR GEARBOX + COOLER AND PIPES VOLUME). USE ONLY FULL SYNTHETIC 75w90 OR 75w140 GRADE OIL
- ELITE RECOMMEND THAT YOU DO NOT USE THE CLUTCH ON UP-SHIFTS, BUT YOU **MUST** ELIMINATE THE POWER THROUGH THE GEARBOX EITHER VIA AN IGNITION CUT SYSTEM OR LIFTING FULLY OFF THE ACCELERATOR
- DOWN SHIFTING IS RECOMMENDED TO BE DONE USING THE CLUTCH. IT IS ALSO RECOMMENDED THAT YOU DO NOT OVER STRESS THE GEARBOX BY USING IT FOR ENGINE BRAKING
- WHEN STATIONARY IT MAY BE NECESSARY TO 'SLIP THE CLUTCH' TO ENGAGE EITHER 1ST OR REVERSE GEAR
- THE CAR **MUST** BE STATIONARY BEFORE SELECTING REVERSE, IF REVERSE IS SELECTED WHEN CAR IS STILL IN A FORWARD MOTION THIS WILL HAVE A CATASTROPHIC EFFECT ON THE GEARBOX INTERNALS
- GEARBOX CASES ARE SEALED USING O-RINGS AND INPUT & OUTPUT ARE SEALED USING LIP SEALS



OPTIONAL EXTRAS AVAILABLE:

- OIL PUMP & SPRAY BAR
- REAR MOUNT & BOBBIN
- DIGITAL GEAR INDICATION SYSTEM
- STANDARD OR HALL EFFECTS POTENTIOMETER
- IGNITION CUT OFF
- EXTENDED GEAR STICK
- TOP MOUNTED GEAR STICK



ELITE RACING TRANSMISSIONS
 Gearworks,
 Salem St.,
 Etruria,
 Stoke On Trent, ST1 5PR.
 Tel 01782 280136,
 Fax 01782 269913,
 Email contact@eliteracingtransmissions.com

TITLE
 FULL ASSEMBLY - IL300-6S EVO2

DRG. No. ERT95541

Issue
 0