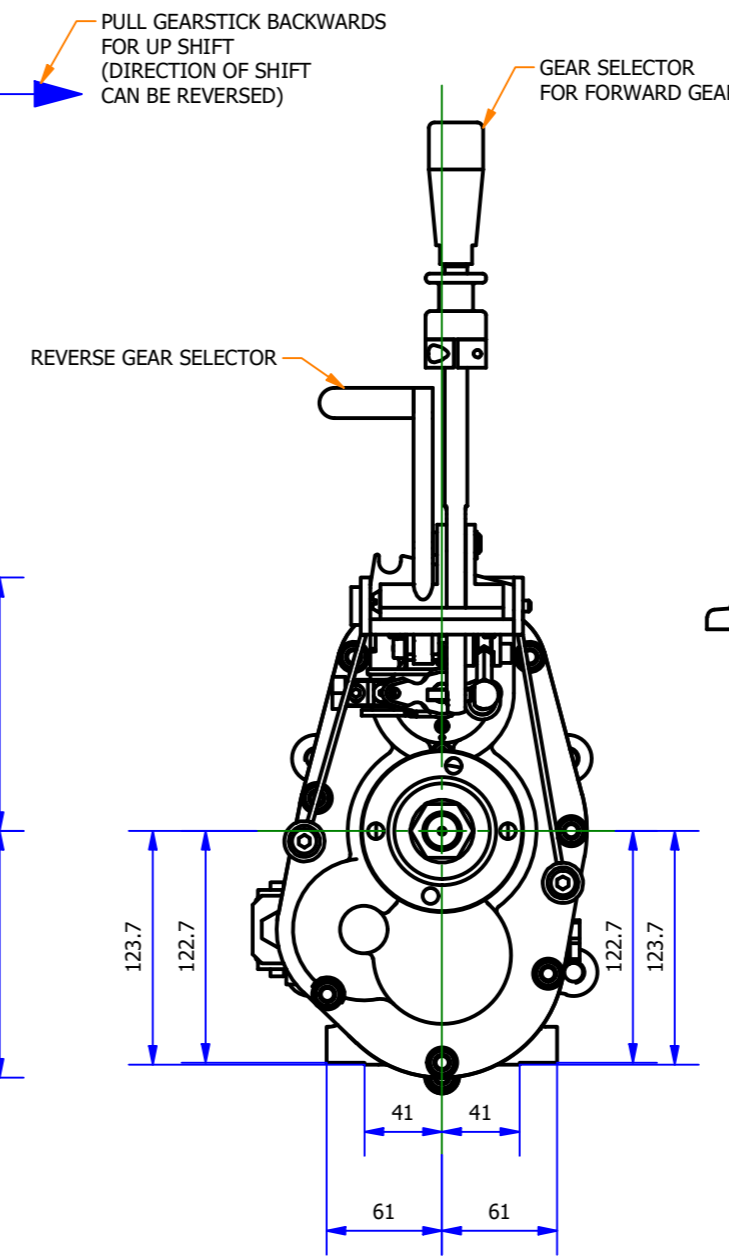
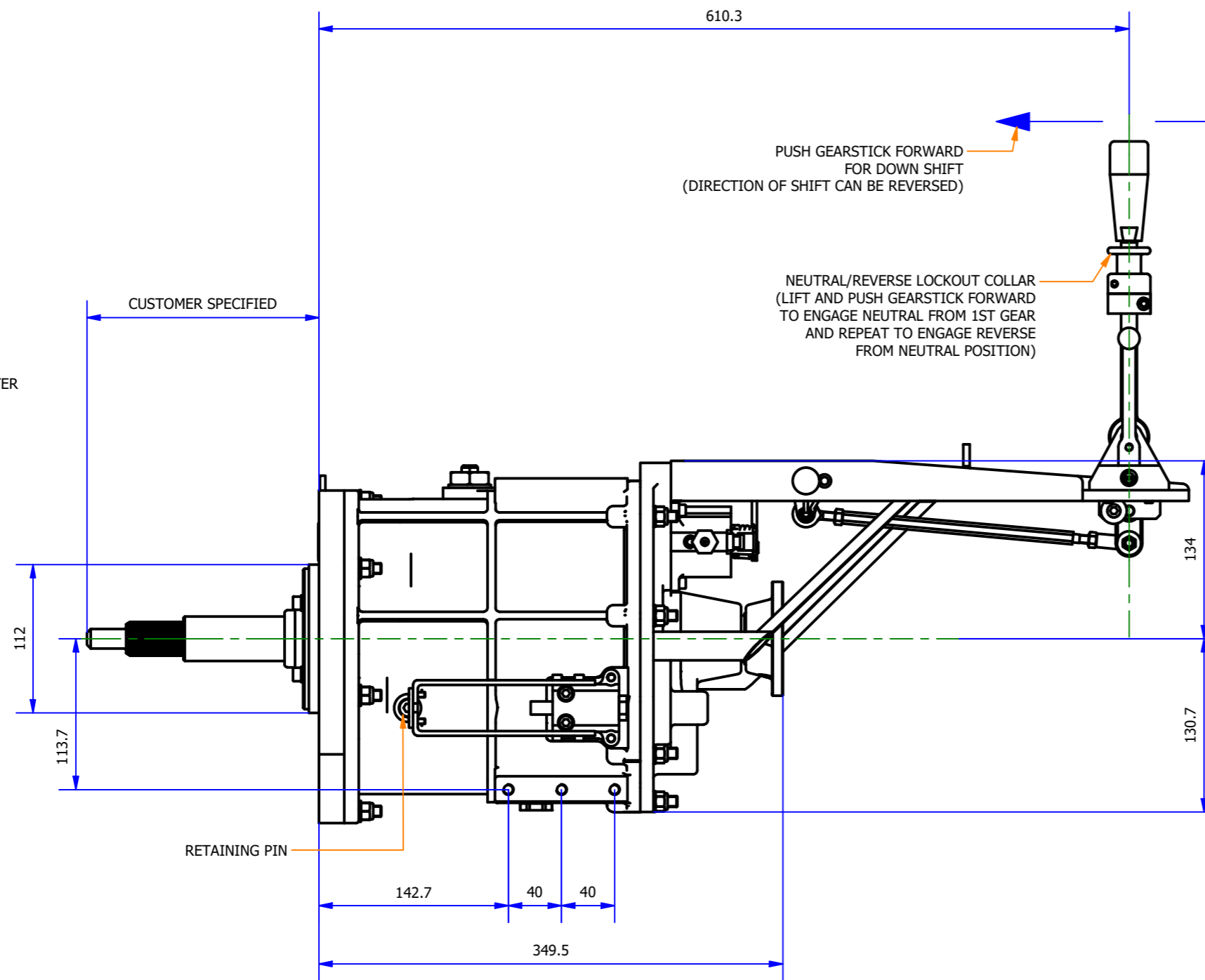
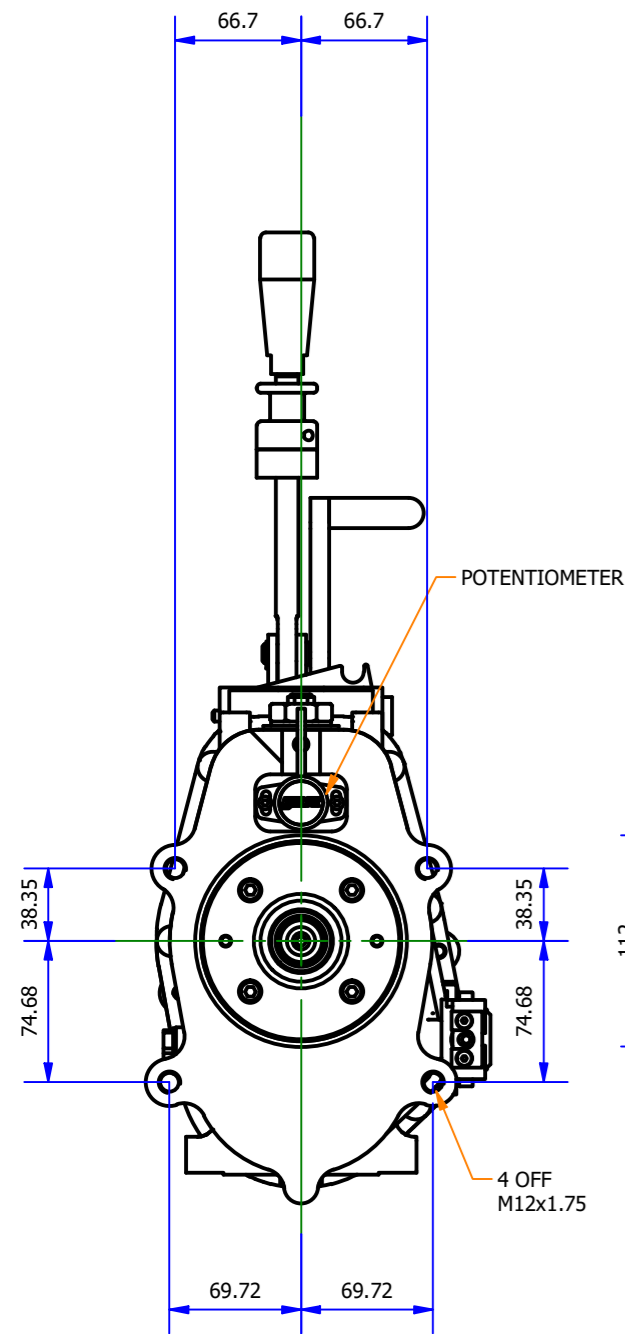
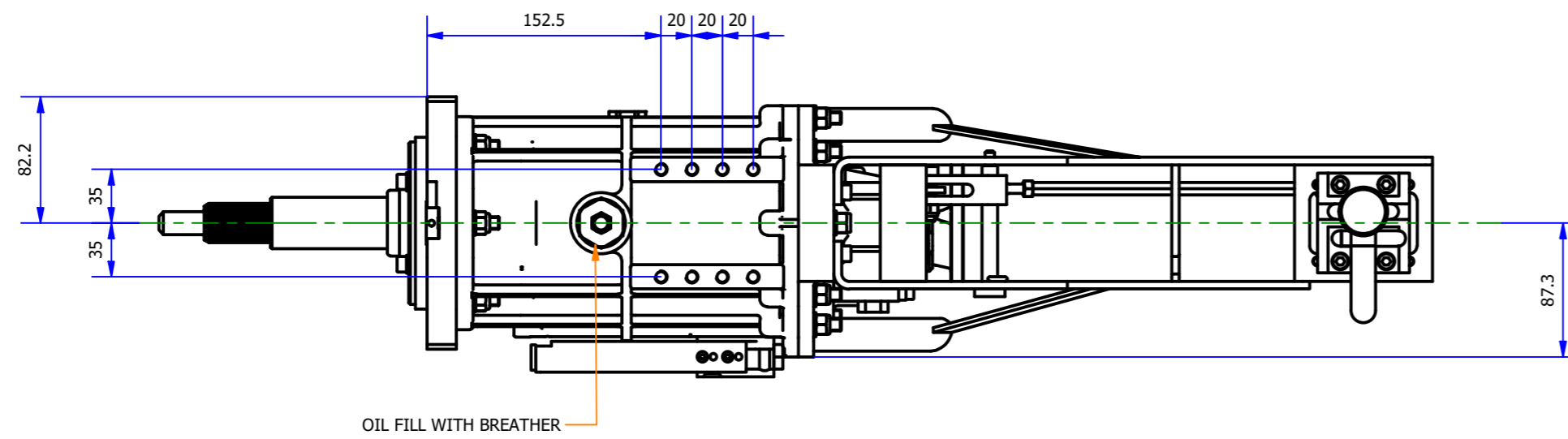


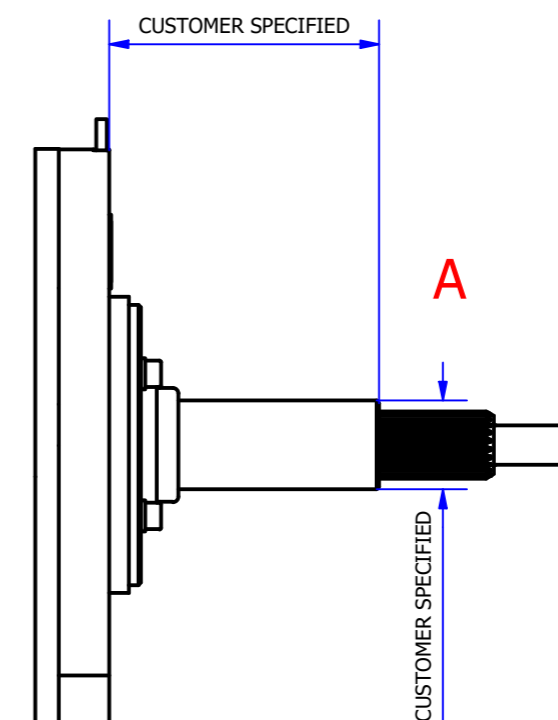
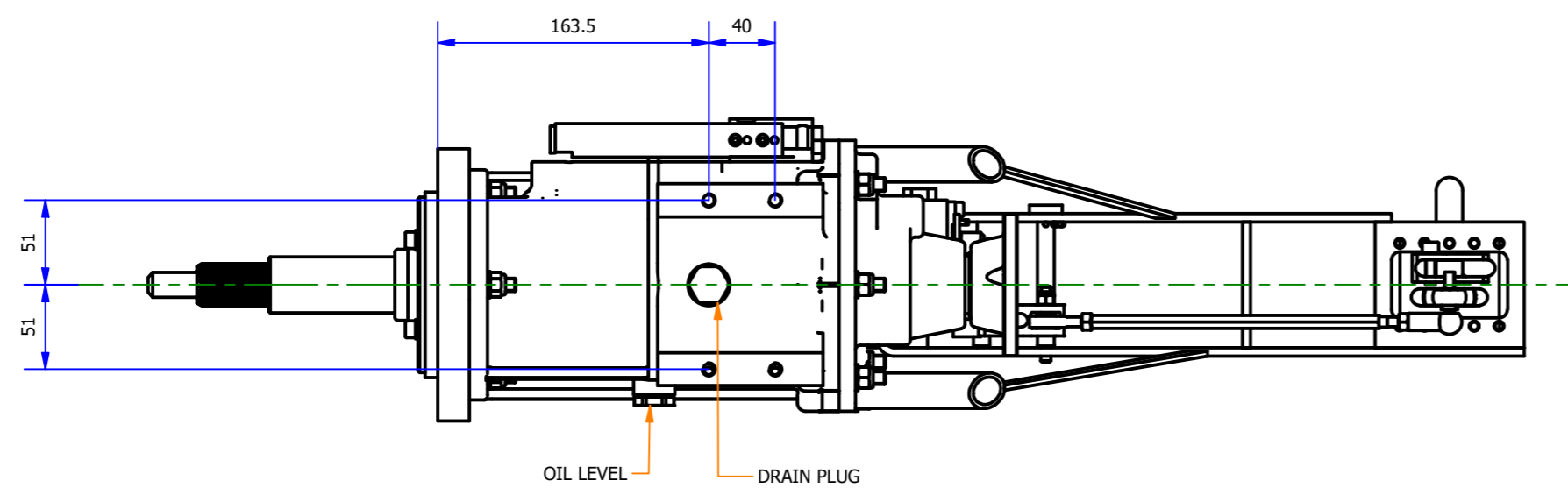
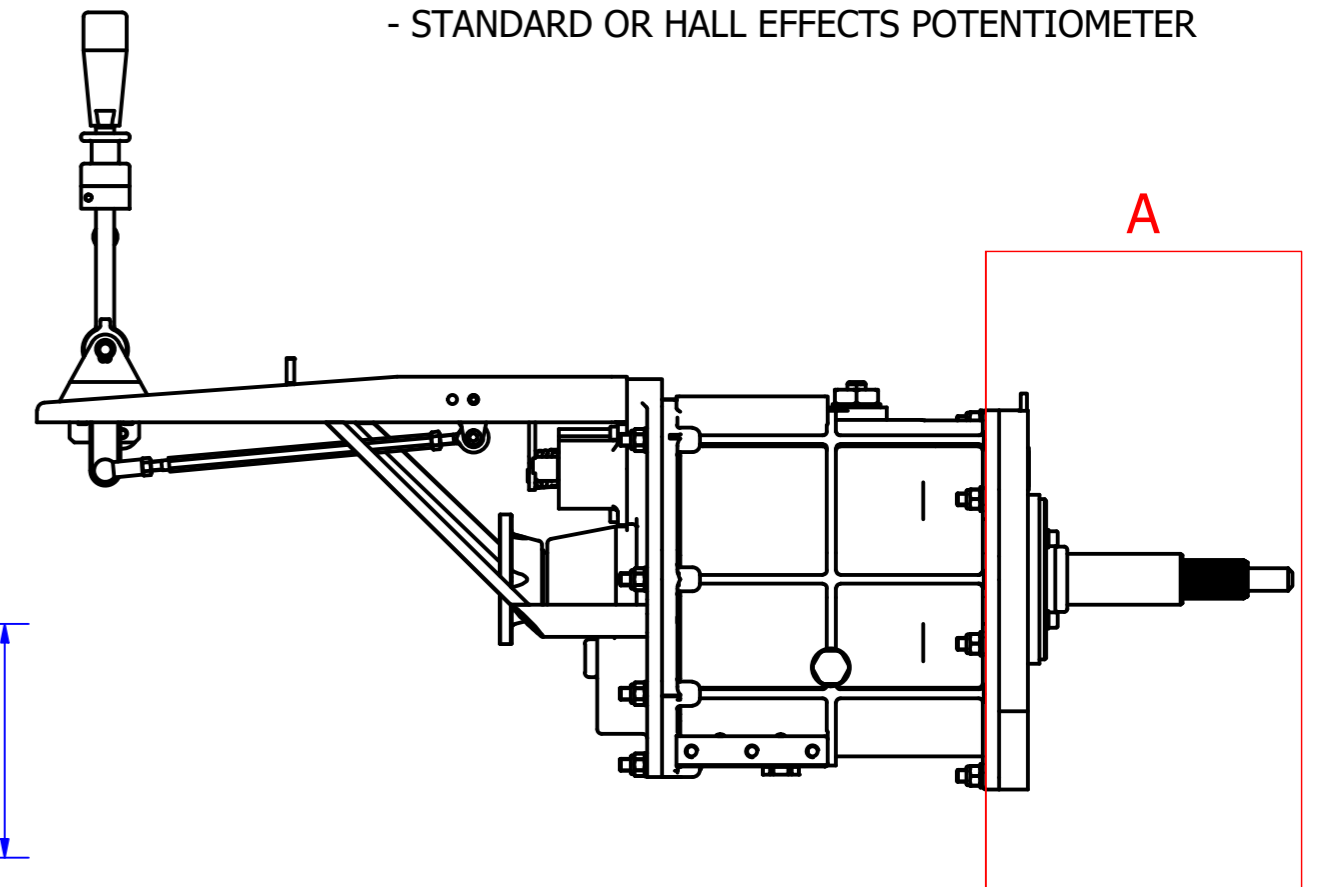
GEARBOX DETAILS;

- GEAR PATTERN N-1-2-3-4-5-6
- REVERSE IS SELECTED BY OWN LEVER
- MANUALLY OPERATED LOCKOUT BETWEEN 1ST/NEUTRAL
- OIL CAPACITY APPROXIMATELY 1 LITRE. USE ONLY FULL SYNTHETIC 75W90 OR 75W140 GRADE OIL
- ELITE RECOMMEND THAT YOU DO NOT USE THE CLUTCH ON UP-SHIFTS, BUT YOU **MUST** ELIMINATE THE POWER THROUGH THE GEARBOX EITHER VIA AN IGNITION CUT SYSTEM OR LIFTING FULLY OFF THE ACCELERATOR
- DOWN SHIFTING IS RECOMMENDED TO BE DONE USING THE CLUTCH. IT IS ALSO RECOMMENDED THAT YOU DO NOT OVER STRESS THE GEARBOX BY USING IT FOR ENGINE BRAKING
- WHEN STATIONARY IT MAY BE NECESSARY TO 'SLIP THE CLUTCH' TO ENGAGE EITHER 1ST OR REVERSE GEAR
- THE CAR **MUST** BE STATIONARY BEFORE SELECTING REVERSE, IF REVERSE IS SELECTED WHEN CAR IS STILL IN A FORWARD MOTION THIS WILL HAVE A CATASTROPHIC EFFECT ON THE GEARBOX INTERNALS
- MUST BE IN NEUTRAL BEFORE SELECTING REVERSE GEAR
- MUST BE OUT OF REVERSE BEFORE SELECTING A FORWARD GEAR
- GEARBOX CASES ARE SEALED USING O-RINGS AND INPUT & OUTPUT ARE SEALED USING LIP SEALS



OPTIONAL EXTRAS AVAILABLE:

- REAR MOUNT
- DIGITAL GEAR INDICATION SYSTEM
- STANDARD OR HALL EFFECTS POTENTIOMETER




 Gearworks
 Salem St.
 Etruria
 Stoke On Trent ST1 5PR
 Tel 01782 280136
 Fax 01782 269913
 Email contact@eliteracingtransmissions.com

TITLE
FULL ASSEMBLY - IL200-6S

DRG. NO. ERT92844

ISSUE
0