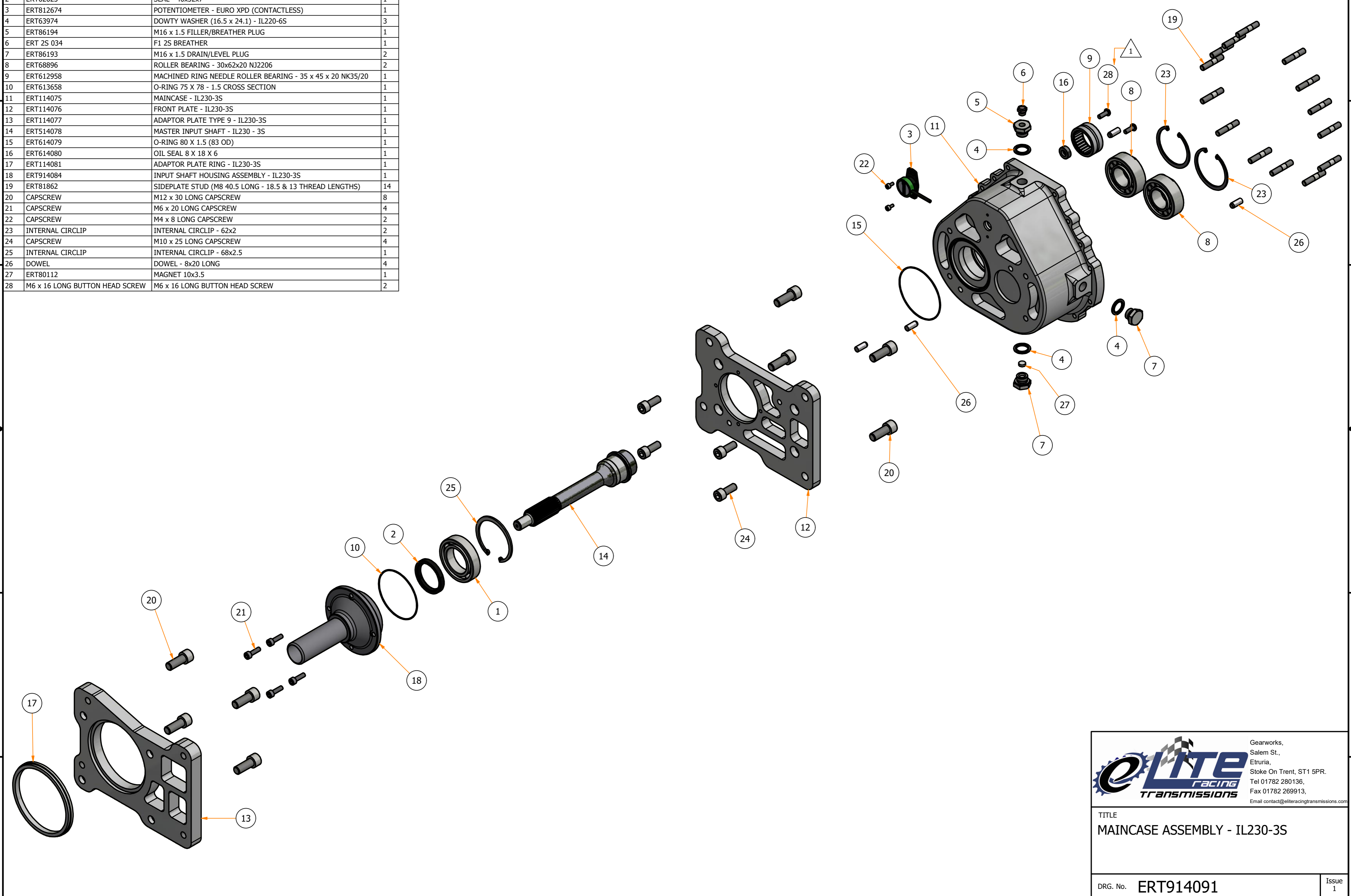


Parts List			
ITEM	PART NUMBER	TITLE	QTY
1	ERT63574	SINGLE ROW BALL BEARING (40x68x15) - PG1	1
2	ERT62623	SEAL - 40x52x7	1
3	ERT812674	POTENTIOMETER - EURO XPD (CONTACTLESS)	1
4	ERT63974	DOWTY WASHER (16.5 x 24.1) - IL220-6S	3
5	ERT86194	M16 x 1.5 FILLER/BREATHER PLUG	1
6	ERT 25 034	F1 2S BREATHER	1
7	ERT86193	M16 x 1.5 DRAIN/LEVEL PLUG	2
8	ERT68896	ROLLER BEARING - 30x62x20 NJ2206	2
9	ERT612958	MACHINED RING NEEDLE ROLLER BEARING - 35 x 45 x 20 NK35/20	1
10	ERT613658	O-RING 75 X 78 - 1.5 CROSS SECTION	1
11	ERT114075	MAINCASE - IL230-3S	1
12	ERT114076	FRONT PLATE - IL230-3S	1
13	ERT114077	ADAPTOR PLATE TYPE 9 - IL230-3S	1
14	ERT514078	MASTER INPUT SHAFT - IL230 - 3S	1
15	ERT614079	O-RING 80 X 1.5 (83 OD)	1
16	ERT614080	OIL SEAL 8 X 18 X 6	1
17	ERT114081	ADAPTOR PLATE RING - IL230-3S	1
18	ERT914084	INPUT SHAFT HOUSING ASSEMBLY - IL230-3S	1
19	ERT81862	SIDEPLATE STUD (M8 40.5 LONG - 18.5 & 13 THREAD LENGTHS)	14
20	CAPSCREW	M12 x 30 LONG CAPSCREW	8
21	CAPSCREW	M6 x 20 LONG CAPSCREW	4
22	CAPSCREW	M4 x 8 LONG CAPSCREW	2
23	INTERNAL CIRCLIP	INTERNAL CIRCLIP - 62x2	2
24	CAPSCREW	M10 x 25 LONG CAPSCREW	4
25	INTERNAL CIRCLIP	INTERNAL CIRCLIP - 68x2.5	1
26	DOWEL	DOWEL - 8x20 LONG	4
27	ERT80112	MAGNET 10x3.5	1
28	M6 x 16 LONG BUTTON HEAD SCREW	M6 x 16 LONG BUTTON HEAD SCREW	2

FOR NON HALL EFFECT POTENTIOMETER (ERT80449)
 USE SPACER ERT314952 AND M4 X 12 CAP SCREWS
 OMIT 8X18X6 SEAL

REVISION HISTORY			
REV	DESCRIPTION	DATE	APPROVED
1	2x M6 BUTTON HEAD SCREWS (ITEM 28) ADDED FOR BARREL BRG RETENTION	10/06/2022	PMB





Gearworks,
 Salem St.,
 Etruria,
 Stoke On Trent, ST1 5PR.
 Tel 01782 280136,
 Fax 01782 269913,
 Email contact@eliteracingtransmissions.com

TITLE
MAINCASE ASSEMBLY - IL230-3S

DRG. No. **ERT914091**

Issue
1